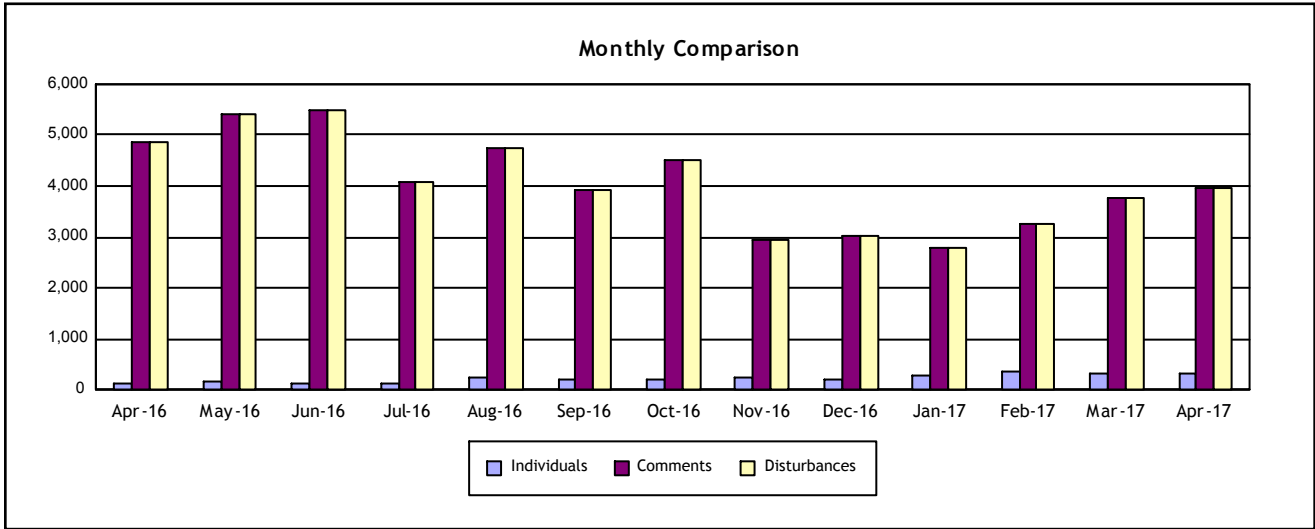


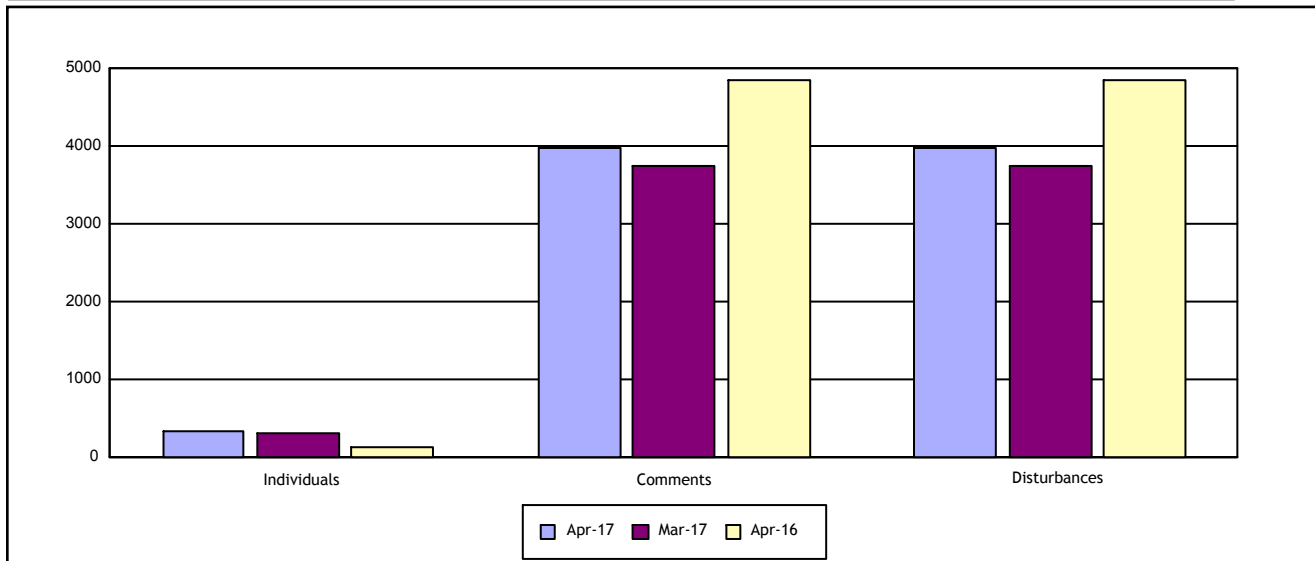
Individuals Submitting Noise Comments **328**

Noise Comments Received **3,979**

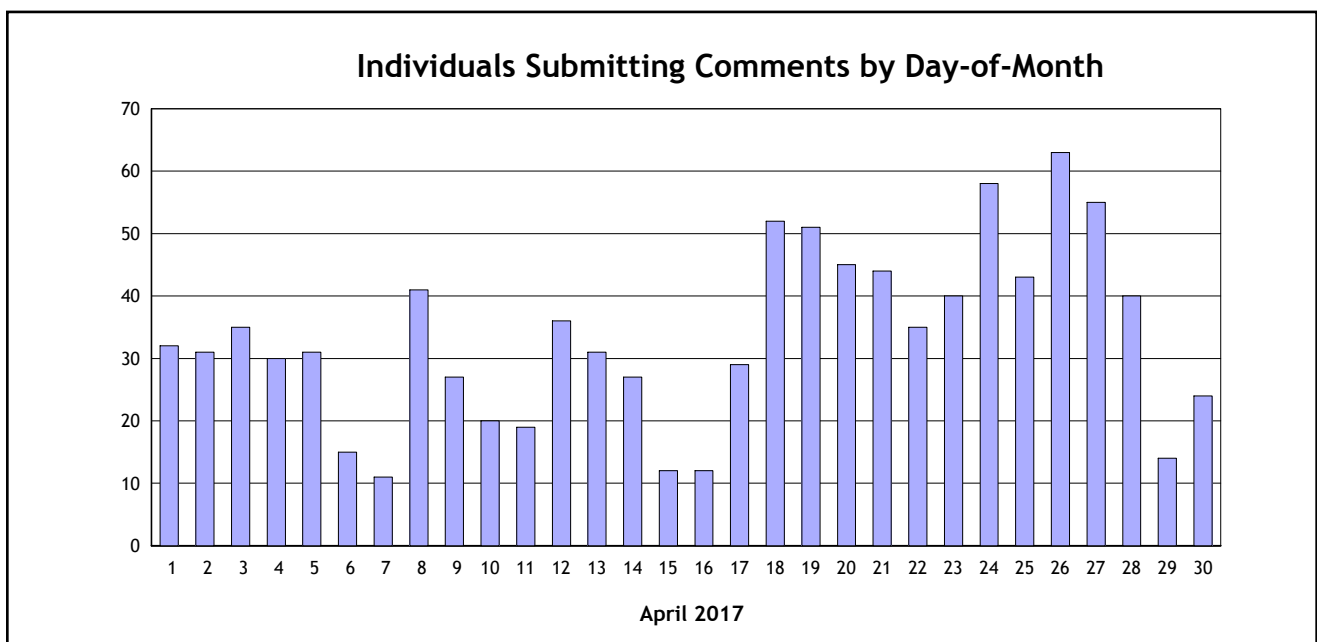
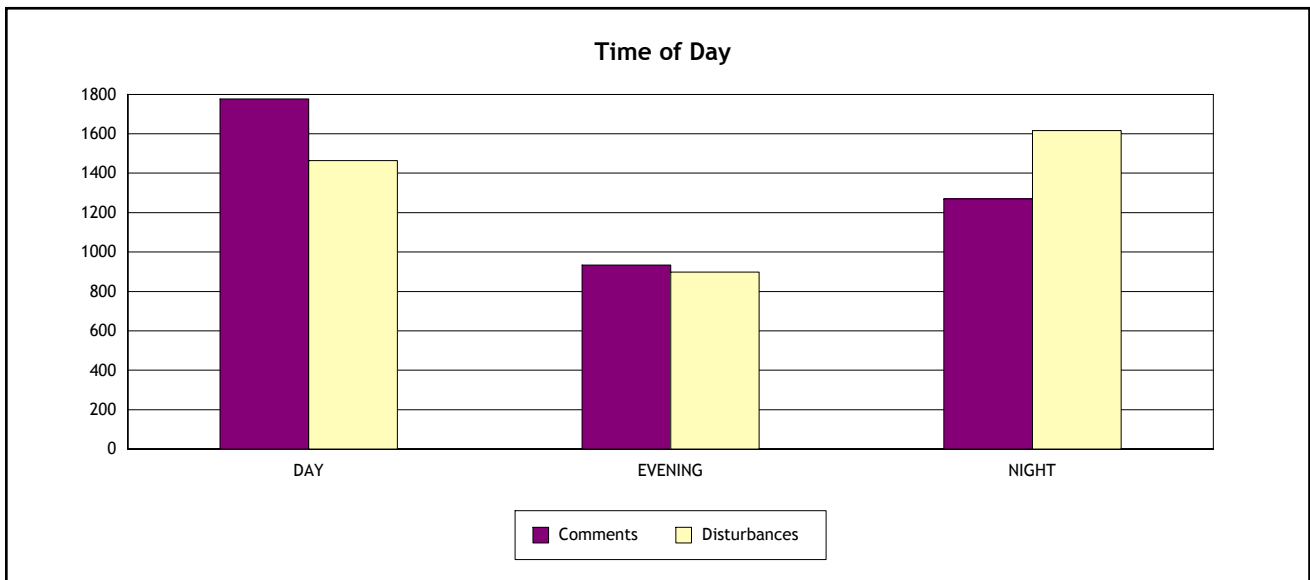
Noise Disturbances Reported **3,979**



	April 2017	March 2017	% Change	April 2016	% Change
Individuals	328	320	3%	137	139%
Comments	3,979	3,758	6%	4,845	-18%
Disturbances	3,979	3,758	6%	4,845	-18%



	Day (7:00 am - 7:00 pm)	Evening (7:00 pm - 10:00 pm)	Night (10:00 pm - 7:00 am)
Comments	1,777	933	1,269
Disturbances	1,464	898	1,617



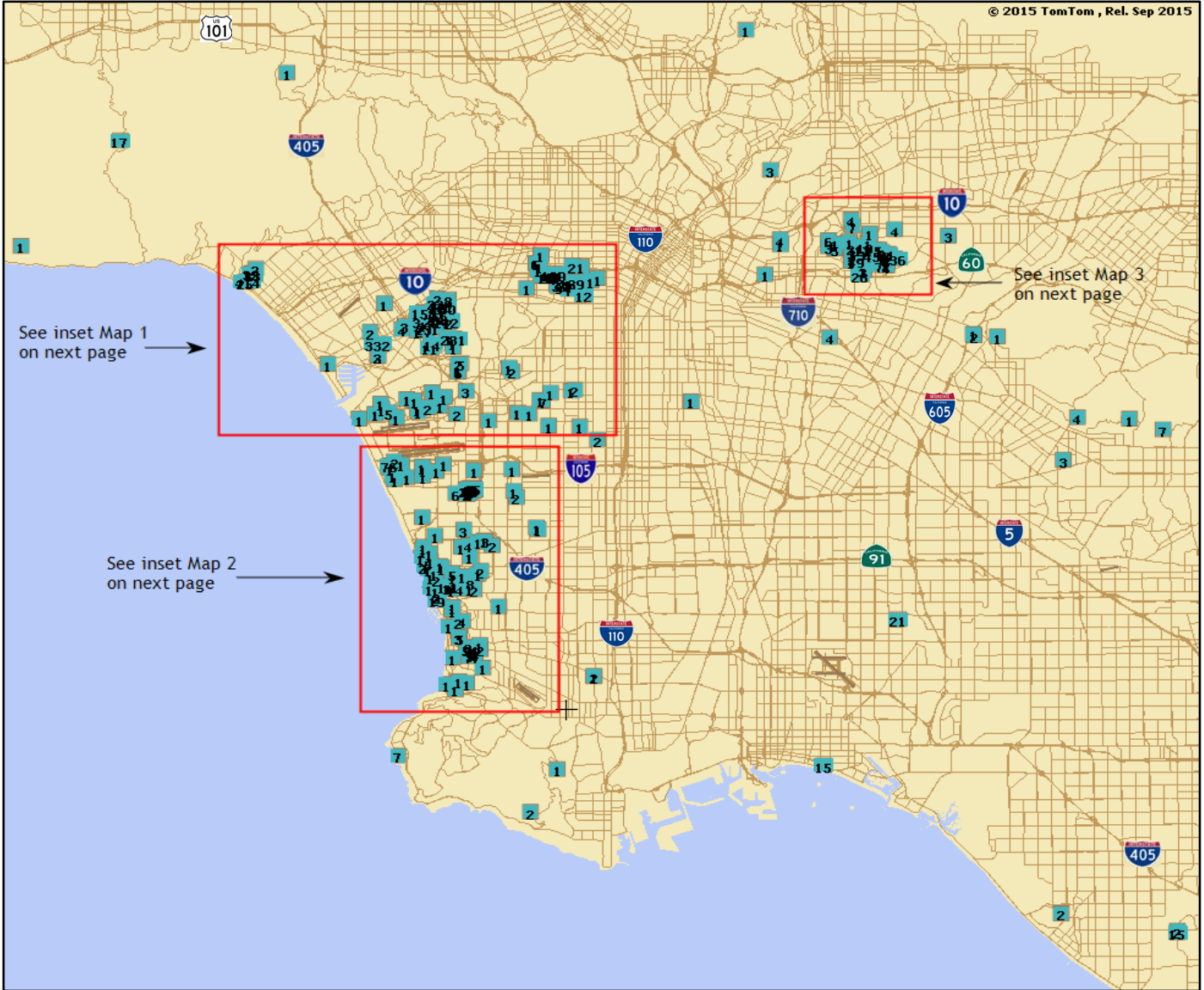
City	Individuals	Comments	Percentage of Comments*
Alhambra	1	4	< 1%
Chino Hills	1	1	< 1%
Commerce	1	4	< 1%
Costa Mesa	2	17	< 1%
Culver City	36	1322	33%
El Segundo	12	88	2%
Encino	1	1	< 1%
Gardena	1	1	< 1%
Glendale	1	1	< 1%
Harbor City	2	3	< 1%
Hawthorne	56	196	5%
Hermosa Beach	20	49	1%
Huntington Beach	1	2	< 1%
Inglewood	9	16	< 1%
Irvine	1	1	< 1%
La Habra	1	7	< 1%
La Habra Heights	1	1	< 1%
Laguna Niguel	1	1	< 1%
Lakewood	1	21	< 1%
Lawndale	1	1	< 1%
Long Beach	1	15	< 1%
Los Angeles	58	910	23%
Los Gatos	1	1	< 1%
Malibu	1	1	< 1%
Manhattan Beach	9	11	< 1%
Monterey Park	40	583	15%
Palos Verdes Estates	1	7	< 1%
Playa Del Rey	4	4	< 1%
Rancho Palos Verdes	2	3	< 1%
Redondo Beach	34	100	3%
Rosemead	1	3	< 1%
Santa Cruz	1	18	< 1%
Santa Monica	6	521	13%
Topanga	1	17	< 1%
Torrance	10	30	< 1%
Trabuco Canyon	1	4	< 1%
Venice	1	1	< 1%



Period: April 2017

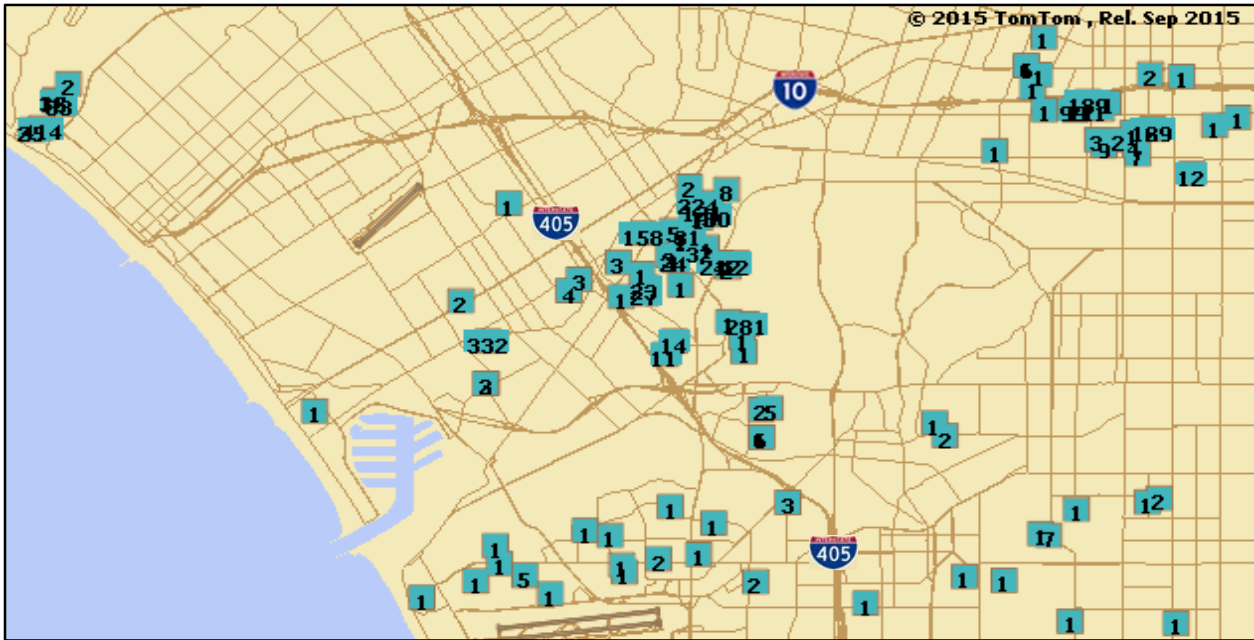
Westchester	1	2	< 1%																	
Whittier	5	11	< 1%																	
TOTAL	328	3979		0	10	20	30	40	50	60	70	80	90	100						

*All percentages are rounded to the nearest whole number

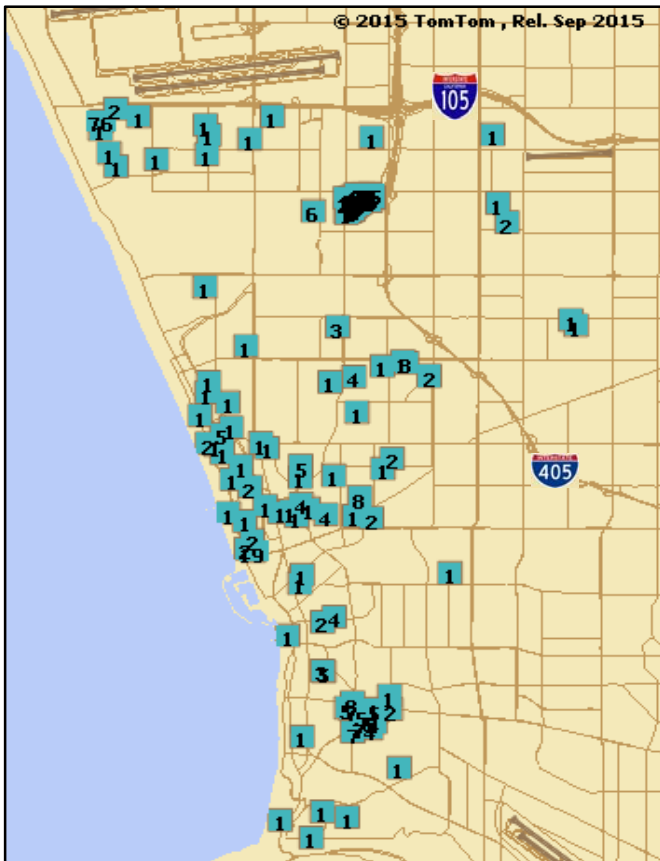


*Box indicates the location of the individual and the number within the box indicates number of comments submitted

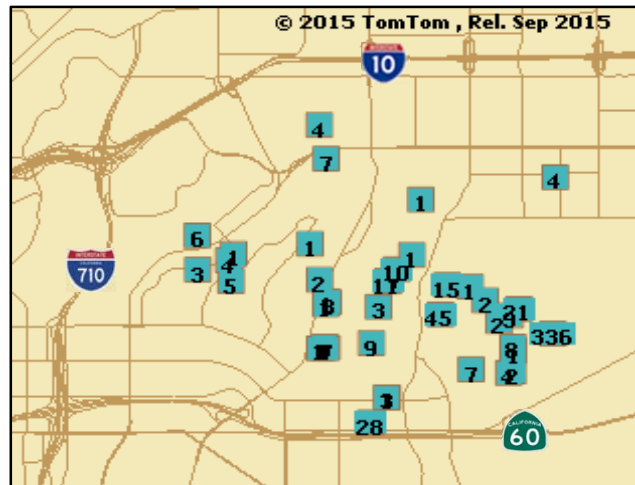
Note: Not included in map are comments received from Chino Hills, Irvine, Laguna Niguel, Los Gatos, Santa Cruz, and Trabuco Canyon, CA.



Map 1



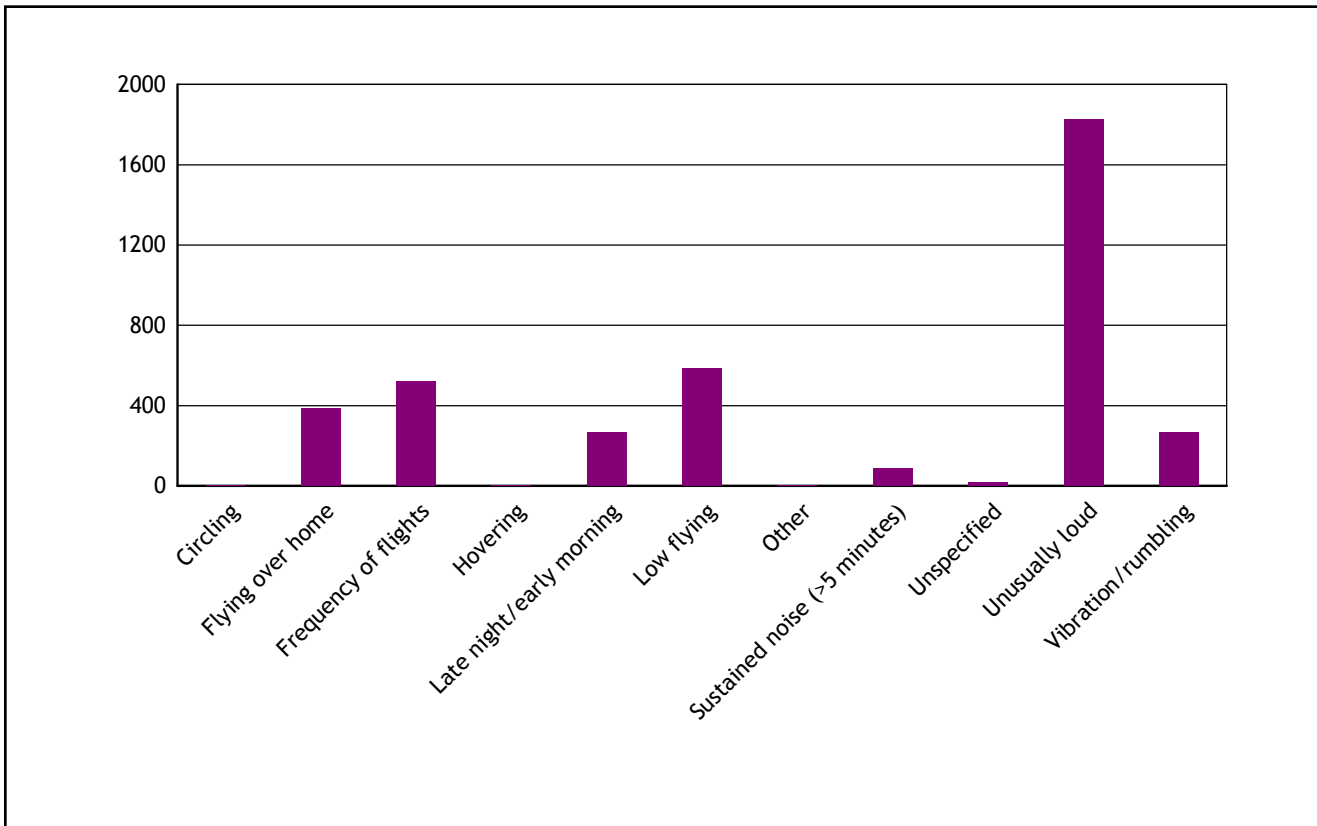
Map 2



Map 3

*Box indicates the location of the individual and the number within the box indicates number of comments submitted

Type of Disturbance*	Number of Comments
Circling	2
Flying over home	388
Frequency of flights	522
Hovering	3
Late night/early morning	270
Low flying	586
Other	5
Sustained noise (>5 minutes)	89
Unspecified	20
Unusually loud	1825
Vibration/rumbling	269
TOTAL	3,979



Note: * As reported by individual.

Period : April 2017

Date	Time	Operator/ Flight No.	Aircraft Type	Runway	Operation Detail	Comment Count
04/26/2017	0:56:23	QFA16	B744	07R	East Departure during West Ops	8
04/09/2017	2:33:59	AAL193	B77W	07R	East Departure during Over Ocean	5
04/30/2017	0:52:33	QFA16	B744	07R	East Departure during Over Ocean	4
04/08/2017	2:22:31	AAL193	B77W	07R	East Departure during West Ops	3
04/26/2017	1:34:33	CAL009	B77W	07R	East Departure during West Ops	3
04/30/2017	0:12:28	VOZ2	B77W	07R	East Departure during Over Ocean	3
04/22/2017	2:12:01	AAL193	B77W	07R	East Departure during Over Ocean	2
04/23/2017	13:26:18	AAL2425	A321	25L	Go-around Operation	2
04/26/2017	1:36:41	CAL007	B77W	07R	East Departure during West Ops	2
04/28/2017	1:29:43	CSN328	A388	07R	East Departure during West Ops	2

<u>Note</u>	
AAL	AMERICAN AIRLINES
CAL	CHINA AIRLINES
CSN	CHINA SOUTHERN AIRLINES
QFA	QANTAS AIRWAYS, LTD
VOZ	VIRGIN AUSTRALIA

Date	Start Time	End Time	Duration (hours:mins:secs)	Flow	Reason
4/1/2017	00:00:00	00:58:59	00:58:59	West Flow	Unknown
4/1/2017	06:21:00	06:29:59	00:08:59	West Flow	West Operations Transition
4/2/2017	00:00:00	00:01:59	00:01:59	West Flow	Over Ocean Operations Transition
4/2/2017	06:04:00	06:29:59	00:25:59	West Flow	Unknown
4/3/2017	00:00:00	00:15:59	00:15:59	West Flow	Over Ocean Operations Transition
4/3/2017	06:11:00	06:29:59	00:18:59	West Flow	Unknown
4/4/2017	06:10:00	06:29:59	00:19:59	West Flow	Unknown
4/5/2017	00:00:00	01:41:59	01:41:59	West Flow	Traffic
4/6/2017	00:00:00	00:22:59	00:22:59	West Flow	Unknown
4/6/2017	05:09:00	06:29:59	01:20:59	West Flow	Low Ceilings
4/7/2017	00:00:00	00:09:59	00:09:59	West Flow	Over Ocean Operations Transition
4/7/2017	06:25:00	06:29:59	00:04:59	West Flow	SoCal TRACON Advised
4/8/2017	00:00:00	06:29:59	06:29:59	West Flow	Weather
4/9/2017	00:00:00	00:06:59	00:06:59	West Flow	SoCal TRACON Advised
4/9/2017	06:25:00	06:29:59	00:04:59	West Flow	West Operations Transition
4/10/2017	03:15:00	06:29:59	03:14:59	West Flow	Runway 25L Closure To Fix Lights
4/11/2017	06:19:00	06:29:59	00:10:59	West Flow	West Operations Transition
4/12/2017	00:00:00	01:34:59	01:34:59	West Flow	Winds
4/12/2017	05:03:00	06:29:59	01:26:59	West Flow	SoCal TRACON Request
4/13/2017	00:00:00	06:29:59	06:29:59	West Flow	Runway Safety Area Improvements
4/14/2017	00:00:00	06:29:59	06:29:59	West Flow	Runway Safety Area Improvements
4/15/2017	00:00:00	01:27:59	01:27:59	West Flow	Unknown
4/15/2017	06:08:00	06:29:59	00:21:59	West Flow	SoCal TRACON Request for Volume
4/16/2017	00:00:00	00:14:59	00:14:59	West Flow	Over Ocean Operations Transition



Date	Start Time	End Time	Duration (hours:mins:secs)	Flow	Reason
4/16/2017	06:16:00	06:29:59	00:13:59	West Flow	West Operations Transition
4/17/2017	00:00:00	06:29:59	06:29:59	West Flow	Wind and Construction
4/18/2017	00:00:00	06:29:59	06:29:59	West Flow	Visibility
4/19/2017	00:00:00	06:29:59	06:29:59	West Flow	Visibility
4/20/2017	00:00:00	00:08:59	00:08:59	West Flow	Over Ocean Operations Transition
4/20/2017	06:00:00	06:29:59	00:29:59	West Flow	LA Center
4/21/2017	00:00:00	00:06:59	00:06:59	West Flow	Over Ocean Operations Transition
4/21/2017	06:09:00	06:29:59	00:20:59	West Flow	SoCal TRACON Advised
4/22/2017	05:25:00	06:29:59	01:04:59	West Flow	SoCal TRACON Request
4/23/2017	00:00:00	03:54:59	03:54:59	West Flow	SoCal TRACON Advised
4/23/2017	04:00:00	06:29:59	02:29:59	West Flow	SoCal TRACON Request
4/24/2017	00:00:00	00:25:59	00:25:59	West Flow	Volume
4/24/2017	06:17:00	06:29:59	00:12:59	West Flow	West Operations Transition
4/25/2017	00:00:00	01:07:59	01:07:59	West Flow	Volume
4/25/2017	04:05:00	06:29:59	02:24:59	West Flow	Winds
4/26/2017	00:00:00	02:41:59	02:41:59	West Flow	Winds
4/26/2017	06:16:00	06:29:59	00:13:59	West Flow	SoCal TRACON Advised
4/27/2017	00:00:00	06:29:59	06:29:59	West Flow	Metroplex Flight Testing
4/28/2017	00:00:00	06:29:59	06:29:59	West Flow	Winds and Volume
4/29/2017	00:00:00	00:19:59	00:19:59	West Flow	Volume
4/29/2017	06:07:00	06:29:59	00:22:59	West Flow	SoCal TRACON Advised
4/30/2017	00:00:00	00:05:59	00:05:59	West Flow	Over Ocean Operations Transition
4/30/2017	06:25:00	06:29:59	00:04:59	West Flow	West Operations Transition